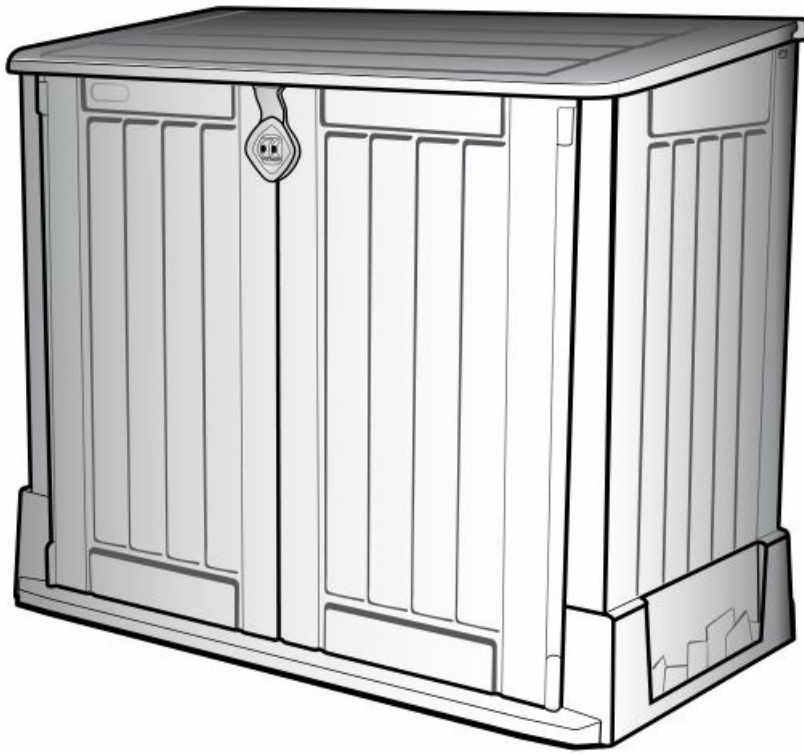


[Skip to content](#)

Manuals+

User Manuals Simplified.



A-1401 580490

keter Store-It-Out Midi User Manual

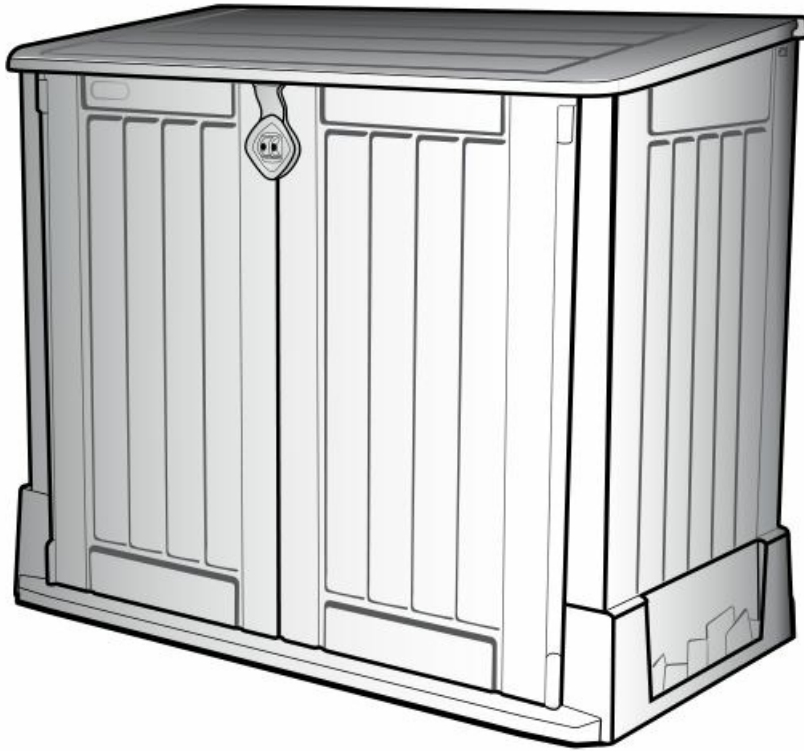
Home » [Keter](#) » keter Store-It-Out Midi User Manual 

keter Store-It-Out Midi User Manual



STORE-IT-OUT MIDI (WOODLAND 30)

USER MANUAL



A-1401 SB04/90

US, Canada:

Tel: +1-877-638-7056

Fax: +1-704-263-9271

UK:

Tel: +44-121-506-0008

Fax: +44-121-422-0808

Spain:

Tlf: +34-976-46-00-06

Fax: +34-976-460-281

Other European Countries:

Tel: +31-8847-22277, Fax: +31-1612-27002

WWW.KETER.COM



WARRANTY ACTIVATION

Thank you for your purchase of the Keter shed. In order to activate your warranty, please log onto our website and fill in the form under warranty activation.

Contents [[hide](#)]

1 LEVEL THE GROUND SURFACE

2 REQUIRED TOOLS

3 BEFORE STARTING ASSEMBLY

4 SHED PARTS

5 ASSEMBLY

6 Option

7 Shelves

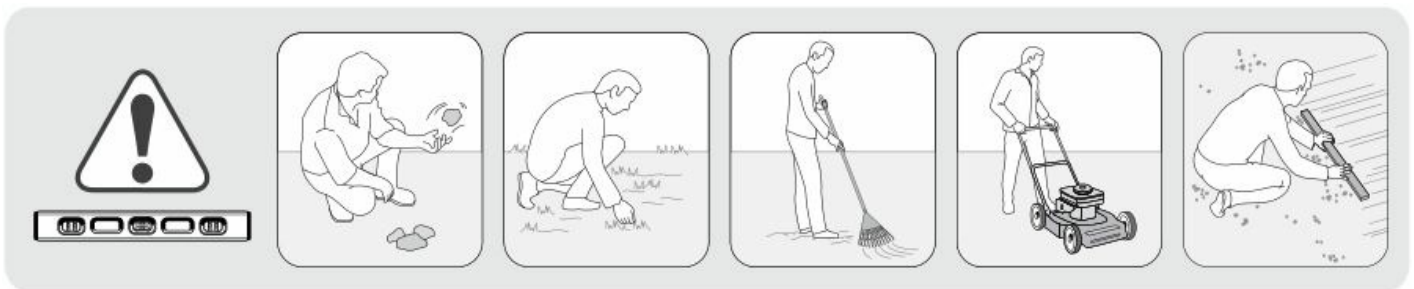
8 CARE AND SAFETY GUIDELINES

9 File Downloads

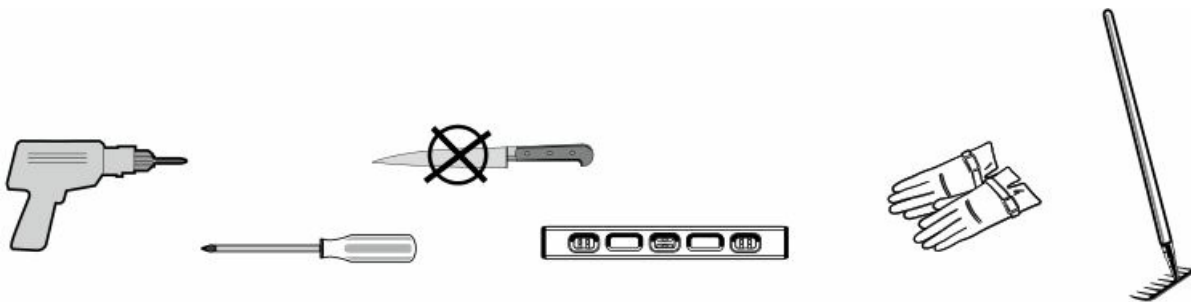
10 References

11 Related Manuals

LEVEL THE GROUND SURFACE



REQUIRED TOOLS

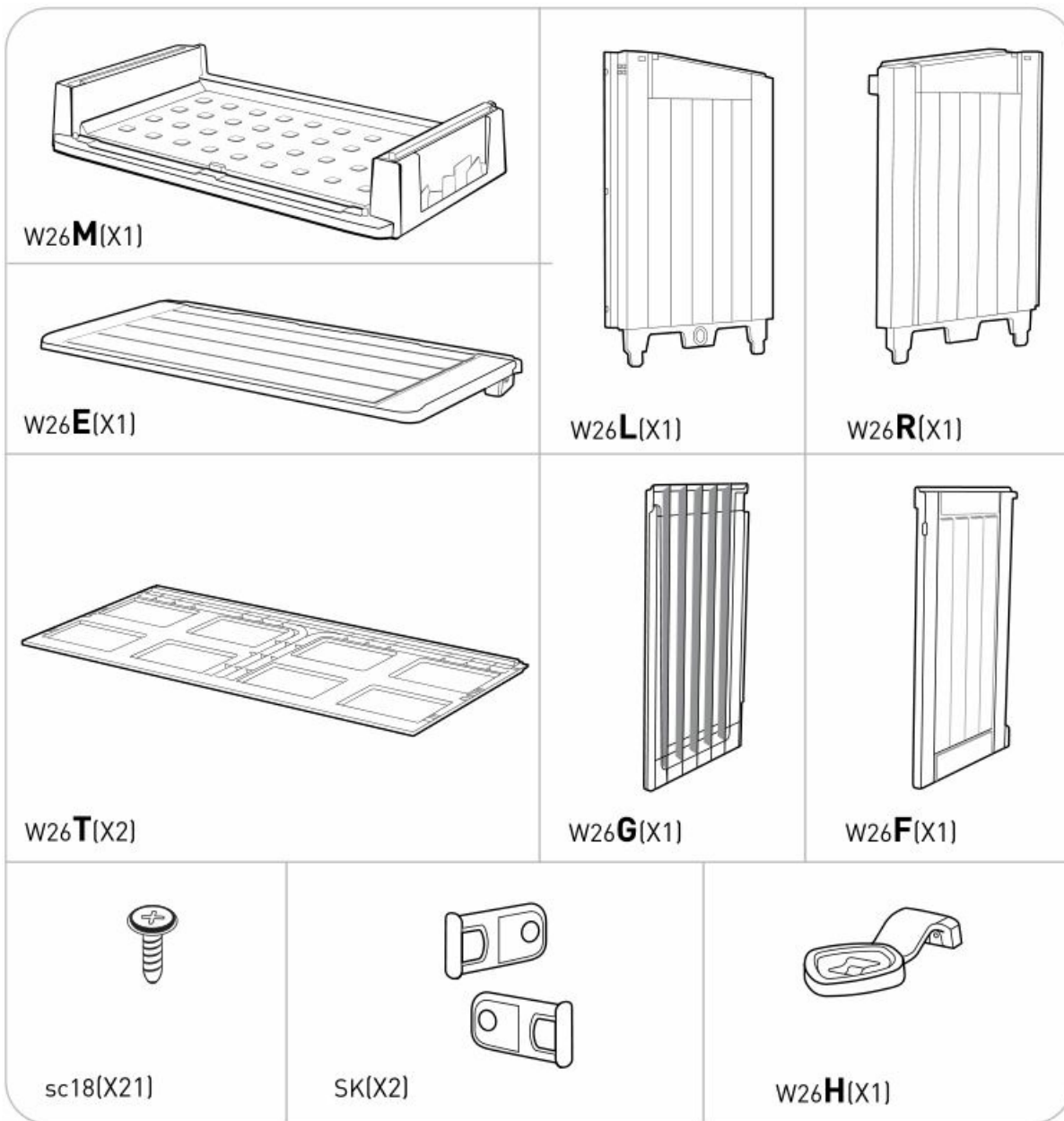


BEFORE STARTING ASSEMBLY

- Read the care and safety guidelines at the end of this manual
- Check to ensure that there are no missing or damaged parts BEFORE starting or arranging assembly
- Remove all parts from the package(s) and spread them out on a clean work surface
- Review all assembly instructions
- Assemble all the parts according to the directions in this manual. Do not skip any steps.

SHED PARTS

Code letters are imprinted on each part for easy identification



NOTE: Due to variations in production, the actual assembled size may vary slightly from the specified dimensions.

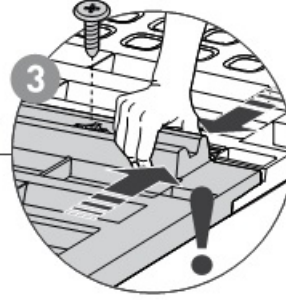
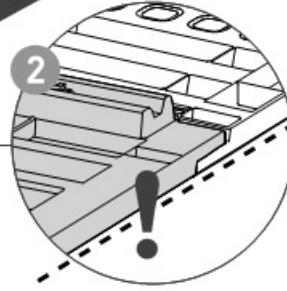
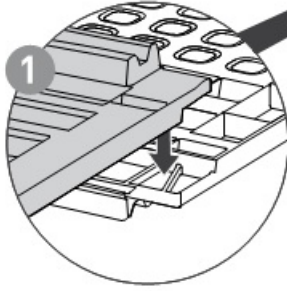
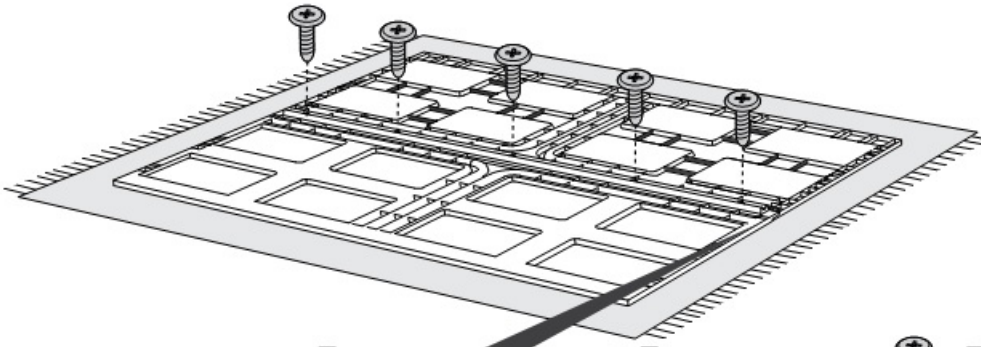
ASSEMBLY

1

W26**T**(X2)



sc18(X5)

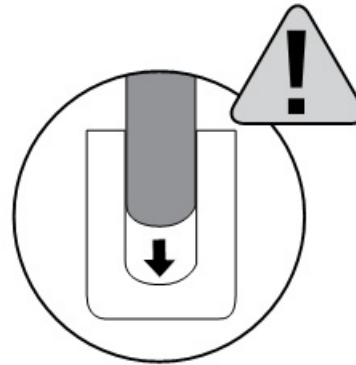
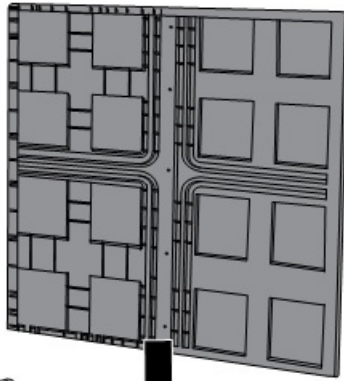


2

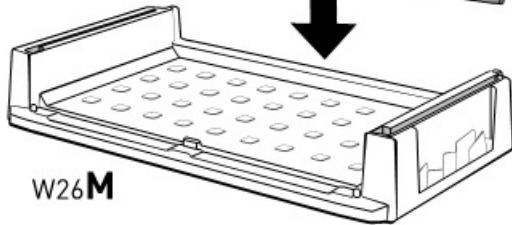
W26**M**(X1)



W26**T**



W26**M**

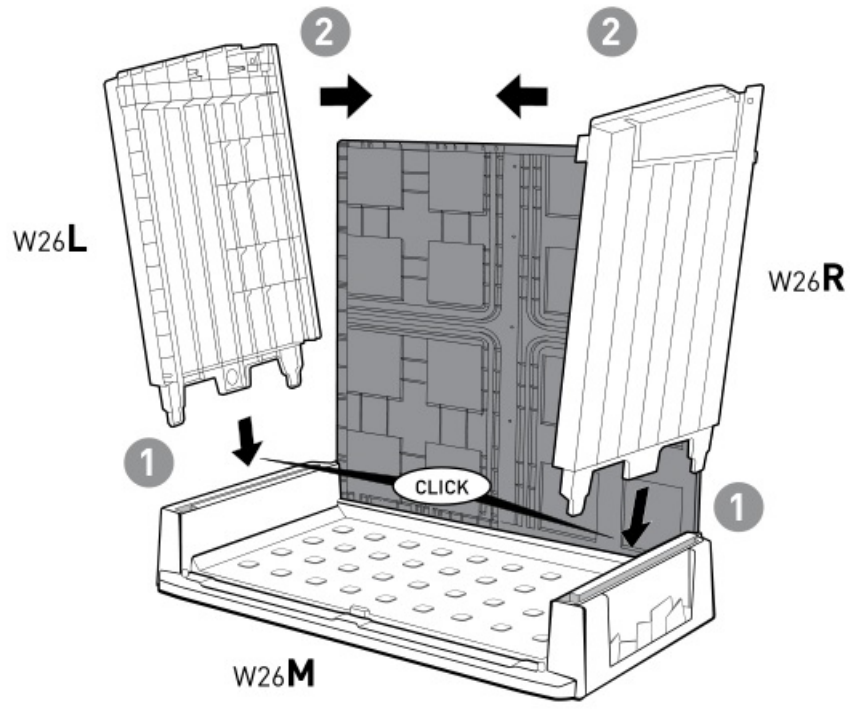


3

W26L(X1)

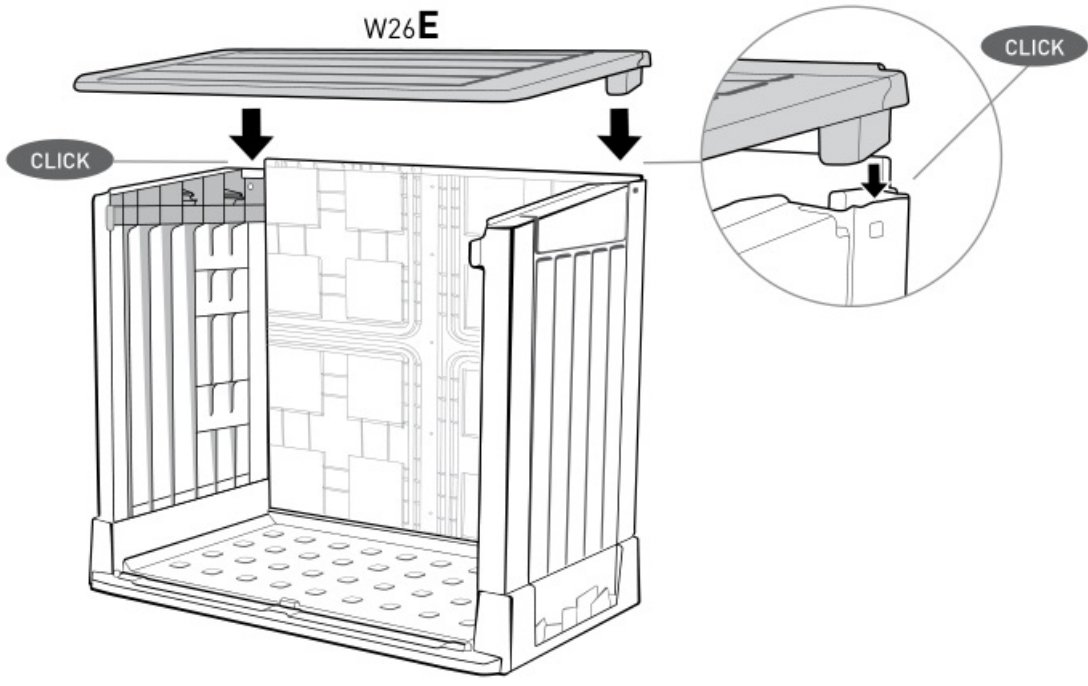



W26R(X1)

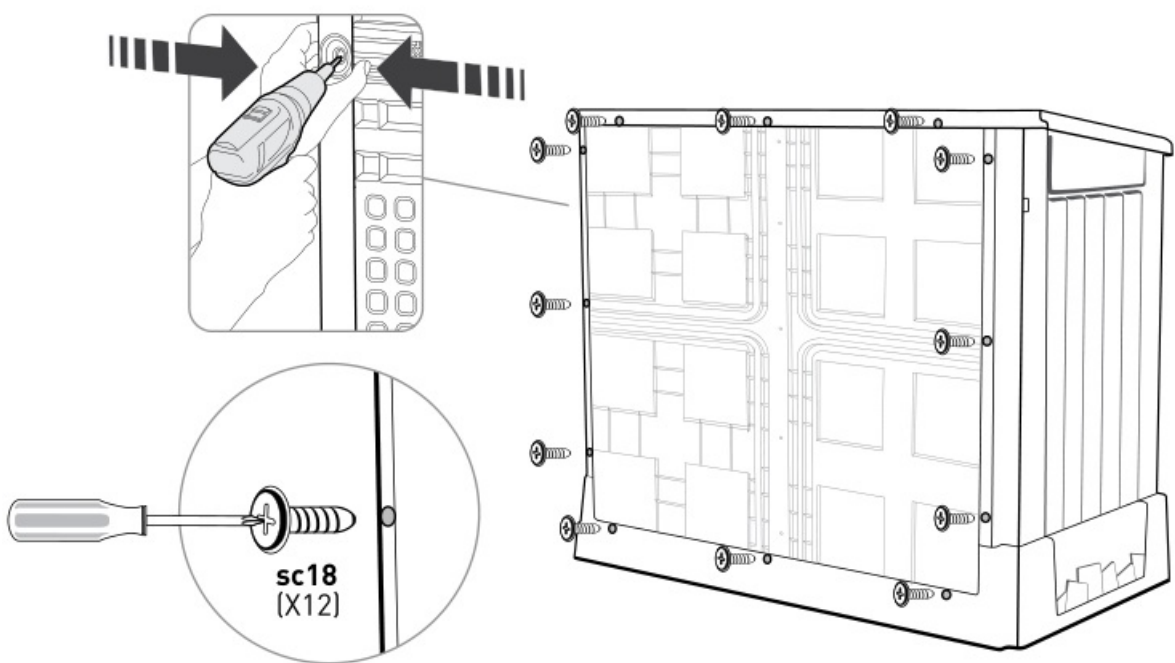


4

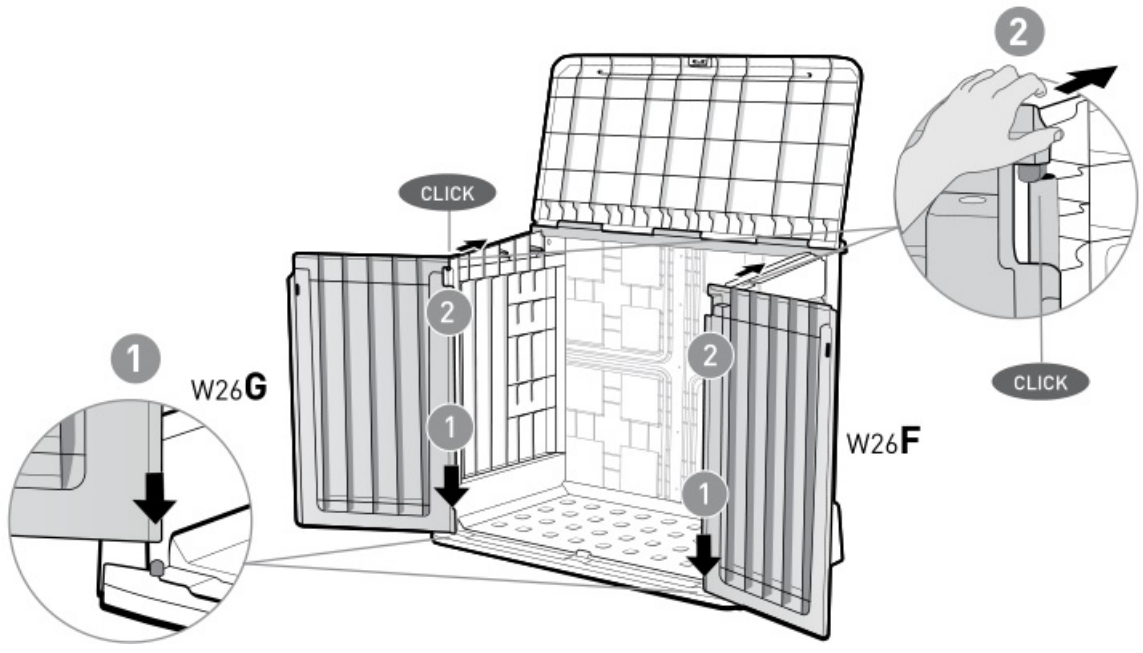
W26E(X1)



5 | sc18(X12) 



6 | W26G(X1)  | W26F(X1) 

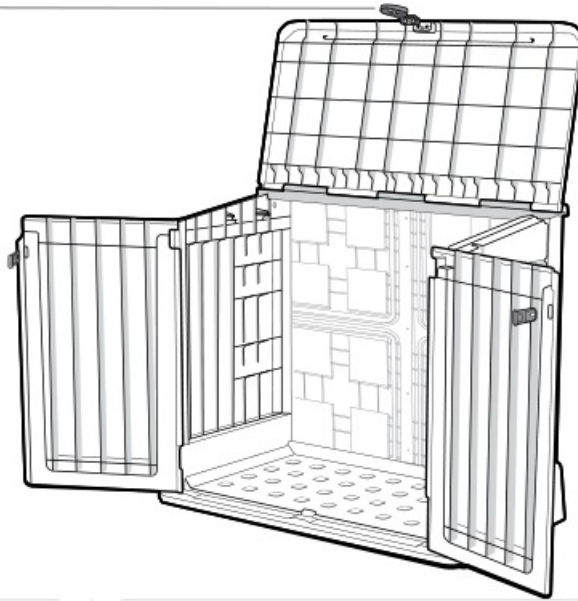
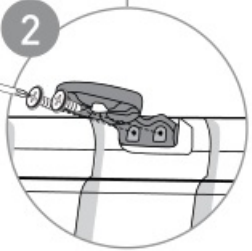


7

W26H(X1)

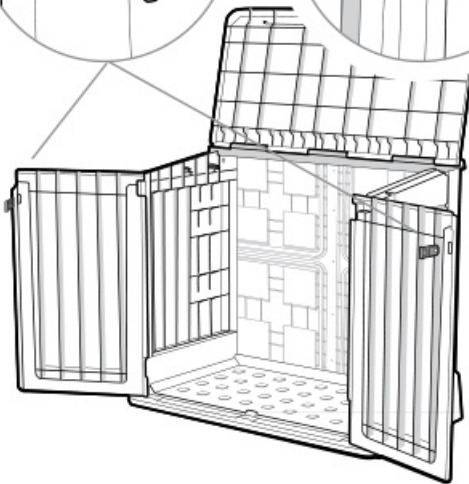
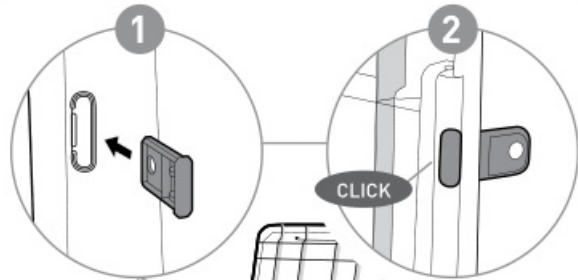


sc18(X2)



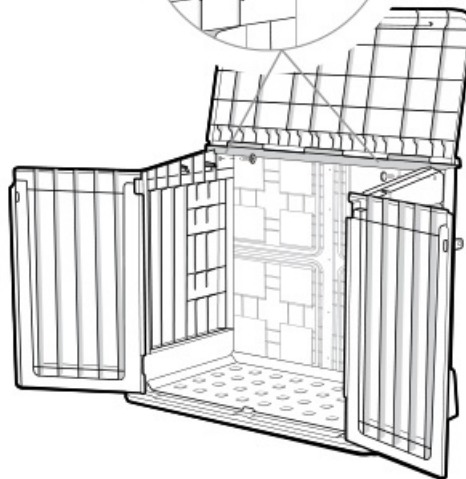
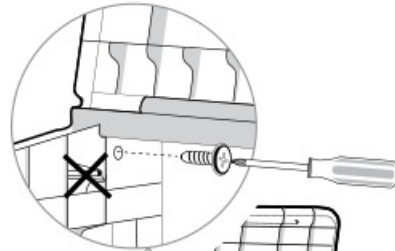
8

SK(X2)



9

sc18 (X2)

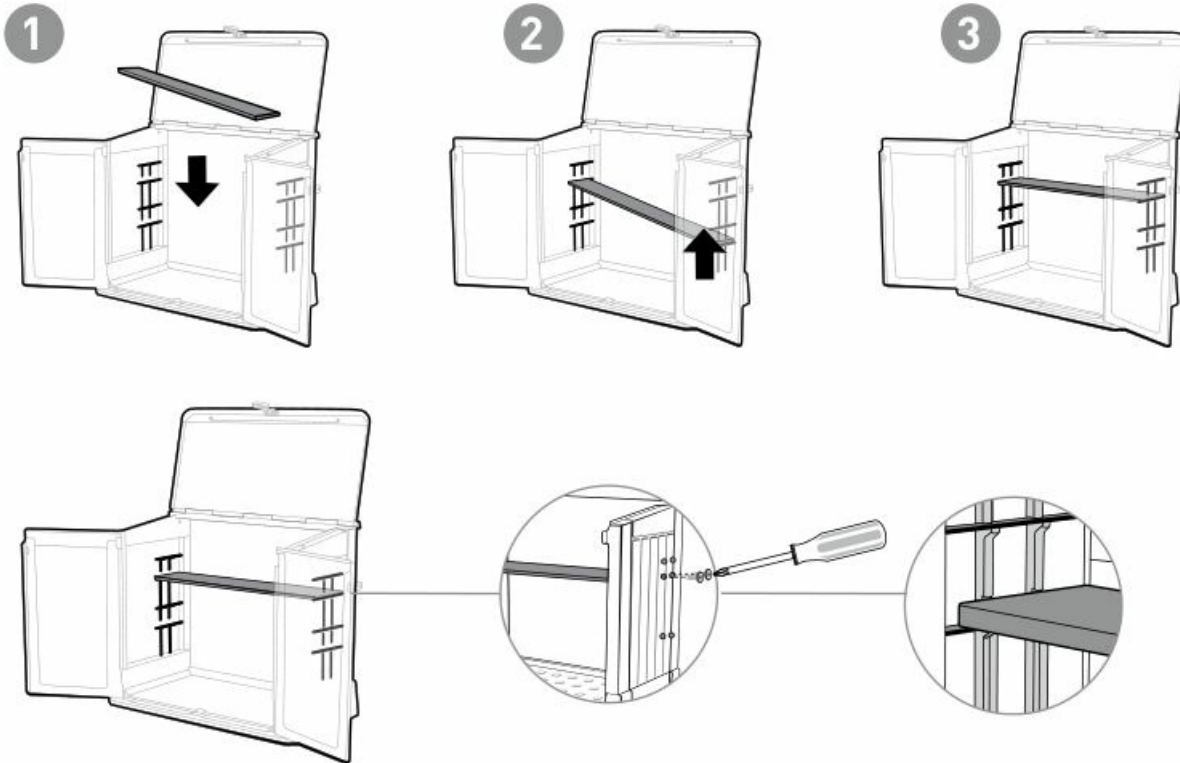
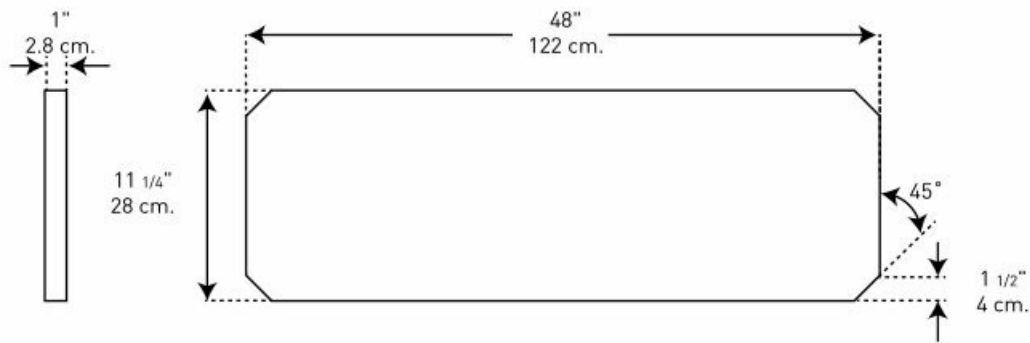


Option



Shelves

It is optional to purchase a wooden plank and use it as a shelf.



CARE AND SAFETY GUIDELINES

- The shed is intended for storage purposes only. It is not designed for habitation.
- It is strongly recommended to secure the shed to an immovable object or anchor to the ground by drilling holes in the shed floor (at the pre-marked locations) and inserting proper screws into the ground (screws are not included).
- Do not attempt assembly on windy or cold days.
- Periodically check the shed to ensure that it is stable and that the site is level.
- Be careful when handling parts with steel edges.
- When assembling or handling the shed, use only those tools listed in the user manual.
- Always wear work gloves, safety goggles and long sleeves when assembling or performing any maintenance on your shed.
- Avoid using a lawnmower or mechanical scythe near the shed.
- Wear safety goggles and always follow the manufacturer's instructions when using power tools.
- Wash the shed with a garden hose or a mild detergent solution. Do not use a stiff brush or abrasive cleaners, including degreasers and oil- or acetone-based cleaning materials, as these may stain or damage the shed.
- Do not store hot items, such as recently used grills and blowtorches, and volatile chemicals in the shed.
- Avoid placing heavy items against the walls, as this may cause distortion.
- Keep the roof clear of accumulated snow and leaves. Large amounts of snow on the roof can damage the shed,

- making it unsafe to enter.
- Wind direction is an important factor to consider when determining the location of the shed. Reduce exposure to the wind, in general, and of the door side in particular. Keep doors closed and locked when the shed is not in use to prevent wind damage.
 - Do not stand on the roof.
 - Consult your local authorities to check if permits are required to erect the shed.

For assistance with assembly, or to request replacement parts, log onto our website or call Customer Service.

DO NOT RETURN THE PRODUCT TO THE STORE.

US, Canada:

6435 South Scatterfield Road,
Anderson, Indiana 46013, USA
Tel: +1-877-638-7056
Fax: +1-704-263-9271

UK:

2nd Floor, WESTPOINT, Mucklow Office
Park, Halesowen, West Midlands, B62 8DY,
United Kingdom
Tel: +44-121-506-0008
Fax: +44-121-422-0808

Spain:

Ctra. Logroño KM 4.5
(50011) Zaragoza , Spain
Tlf: +34-976-46-00-06
Fax: +34-976-460-281

Other European Countries:

Ericssonstraat 17, Postbus 224,
5100 AE Rijen, the Netherlands
Tel: +31-8847-22277
Fax: +31-1612-27002

WWW.KETER.COM

File Downloads



User Manual

[Download](#) [optimized]

Store-It-Out Midi, WOODLAND 30, 17197253, 17197013

[Download](#)

References

- [Keter | Create Amazing Spaces](#)

Related Manuals

1. [Keter Oakland 759 User Manual](#) Keter Oakland 759 User Manual – Download [optimized]Keter Oakland 759...
2. [Singular Sound MIDI Maestro MIDI Foot Controller User Manual](#) Singular Sound MIDI Maestro MIDI Foot Controller User Manual –...
3. [Mercia Garden Log Store and Store Instructions](#) Mercia Garden Log Store and Store Instructions BEFORE YOU START...
4. [Midiplus X pro mini Series MIDI Keyboard User Manual \[X4 pro mini, X6 pro mini\]](#) Midiplus X pro mini Series

MIDI Keyboard User Manual [X4...

5. **CL store 6 Tier wire shelving rack User Manual** 6 Tier wire shelving rack Product Manual Dear Customer, Thank...
6. **Mercia Garden Palletised Bike Store Instruction Manual** Instruction Manual Mercia Garden Palletised Bike Store
Please retain product...