

## Spare parts list for RPST6172

Pos no	Reference no	CN Description	English name	QTY
1	8SFDD08-16D	外六角法兰面螺栓M8×14	Hex Washer Screw Gb/T5783-1986	6
2	8145-765001	轴承座	Bearing Housing	2
3	8210-765001	塑料轴承	Plastic Bearing	2
4	8101-765106	搅龙用隔套二	Auger Spacer 2	4
5	8334-765001	搅龙轴套	Auger Spacer Shaft Sleeve	8
6	303180424	新右搅龙焊合	New Right Auger Welding	2
7	8101-765105	搅龙用隔套一	Auger Spacer 1	6
8		骨架密封圈	Grease Plug Φ19×Φ32×7	2
9	303090031	右蜗轮箱	Right Worm Gear Case	1
10	303020142	方头螺栓	Square Head Bolt M8X10	2
11	303090033	蜗轮	Worm Gear	1
12		半圆键GB/T1099-1979	Woodruff Key 5×7.5×19	1
13	8334-765008	蜗轮轴套	Worm Gear Shaft Sleeve	2
14	8208-765002	蜗轮箱密封垫	Flat Washer	1
15	303090032	左蜗轮箱	Left Worm Gear Case	1
16	8SFDD06-18D	外六角法兰面螺栓M6×18	Hex Washer Screw Gb/T5783-1986	6
17	8081-765502	600新搅龙轴	600 New Auger Spacer Shaft	1
18	BC-122808-ST	6001Z深沟球轴承12×28×8	6001Z Ball Bearing Gb/T276-1994	1
19	BC-203709-ST	6904Z深沟球轴承 20×37×9	6904Z Ball Bearing Gb/T276-1994	1
20	8202-765003	蜗轮箱垫圈	Worm Gear Case Washer	1
21	BK-203510-ST	51104推力轴承20×35×10	51104 Thrust Bearing Gb/T 301-1995	1
22		骨架密封圈	Grease Plug Φ20×Φ35×7	1
23	303160204	蜗杆	Worm	1
24	303160355	安全销	Shear Pin	4
25	8NG-06D	防松螺母（塑胶头）M6	Nylon Lock Nut Gb/T6182-2000	4
26	303180425	新左搅龙焊合	New Left Auger Welding	2
27	8PB06-35B	弹性圆柱销GB/T879.1-2000	Elastic Cylindrical Pin 6×35	2
28	2408-7651C01	DB7651风叶焊合	Db7651 Impeller Welding	1
29	8SLJD08-18D	半圆头方颈螺栓GB/T12-1988	Cup Head Square Bolt M8×16	3
30	8231-765003	24寸铲雪板	24" Snowplow Plate	1
31	8NG-08D	法兰面普通带齿螺母M8	Nut With Tooth Gb/T6182-2000	3
32	8006-765001	24寸大机组座焊合	24" Housing Welding	1
33	8SLJD08-18D	半圆头方颈螺栓GB/T12-1988	Cup Head Square Bolt M8×18	4
34	8341-765001	滑撬	Skid Shoe	2
35	8NG-08D	法兰面防松螺母M8	Lock Nut Gb/T6182-2000	4
36	302040011	切边带（无齿）	V-Belt	1
37	302040026	同步带5M带长750宽15mm	Synchronous Belt Jb/T7512.1-1994	1
38	2050-7659C03	DB7659C新风叶定位套管	Db7659C New Impeller Positioning Bushing	1

39	BH-204731-ST01	UC204外球面轴承20x47x31	Uc204 Ball Bearing Gb/T7810-1995	1
40	8186-765001	轴承压板	Bearing Platen	1
41	8NG-08D	法兰面防松螺母M8	Lock Nut Gb/T6182-2000	3
42	8122-765003	DB7650大三角带轮HT250	Db7650 Auger Pulley	1
43		平键GB/T1096-2003	Flat Key C6X18	1
44	8WF-08D	平垫片GB/T96.1-1985	Flat Washer Φ8×Φ28×3	1
45	8SFDD08-25D	外六角螺栓GB/T5783-1986	Hex Washer Screw M8x25	1
46	2004-710802	7108档位拨叉焊合	7108 Gear Shifting Fork	1
47	8SFDD06-10D	法兰面外六角螺栓M6×10	Hex Washer Screw Gb/T5783-1986	2
48	8186-765002	离合操作下杆压板焊合	Clutch Operation Poel Platen Welding	1
49	8292-765011	导向轮板	Guide Plate	1
50	8SFDD06-20D	法兰面外六角螺栓M6×12	Hex Washer Screw Gb/T5783-1986	2
51	8NG-08D	防松螺母（塑胶头）M6	Nylon Lock Nut Gb/T6182-2000	1
52	8121-765005	DB7650导向轮	Db7650 Guide Pulley	1
53	8206-765004	导向轮螺钉	Guide Wheel Screw	1
54	8NG-08D	法兰面防松螺母M8	Lock Nut Gb/T6182-2000	6
55	8144-765501	轮式小马力机箱焊合	Case Welding	1
56		法兰面螺栓	Screw M8X20	1
57		平垫片	Flat Washer Φ8×Φ28×3	1
58		15英寸,转向右轮胎总成	15" Snow Wheel Assembly	1
59	2049-710301	转向轮轴六方套	Six Square Sleeve Of Wheel Shaft	2
60	2123-710301	转向大齿轮	Big Gear Wheel	1
61	202190001	差速器组件	Differential Gear System Assembly	1
62		防松螺母（塑胶头）	Lock Nut M6	4
63	8186-765004	DB7650出雪口定位压板	Db7650 Chute Press Plate	4
64	8SJA06-25D	十字槽盘头机用螺栓M6×25mm	Cross Recessed Countersunk Head Bolt	4
65	2120-710304	大马力左差速轴	High Horse Power Left Differential Shaft	1
66		15英寸,转向左轮胎总成	15" Snow Wheel Assembly	1
67	8281-765501	插销组合	Latch Assembly	1
68	8183-765503	DB7655大底板	Db7655 Large Plate	1
69	8SFDD06-12D	外六角法兰面三角头螺栓	Screw Gb/T6564-2000/M6×12	6
70	303200012	下扫雪拉线总成	Down Auger Cable Assembly	2
71	303200061	上扫雪拉线总成	Up Auger Cable Assembly	1
72	303200064A	左档位拉线总成	Left Shift Cabel Assembly	1
73	8370-710310	右档位拉线总成	Right Shift Cabel Assembly	1
74	303070142	调线板	Adjustable Plate	2
75	303200060	行走上拉线总成	Up Drive Cable Assembly	1
76		外六角法兰面螺栓M8×20	Hex Washer Screw Gb/T5783-1986	4
77	8NG-8D	加厚普通螺母GB/T6182-2000	Thickening Common Screw M8	4
78		M8旋钮	M8 Knob	4
79	8WT-08D	凹垫GB/T860-1987	Cupped Washer Φ8×Φ22×2	4
80	2043-710301	下扶手	Down Handrail	1

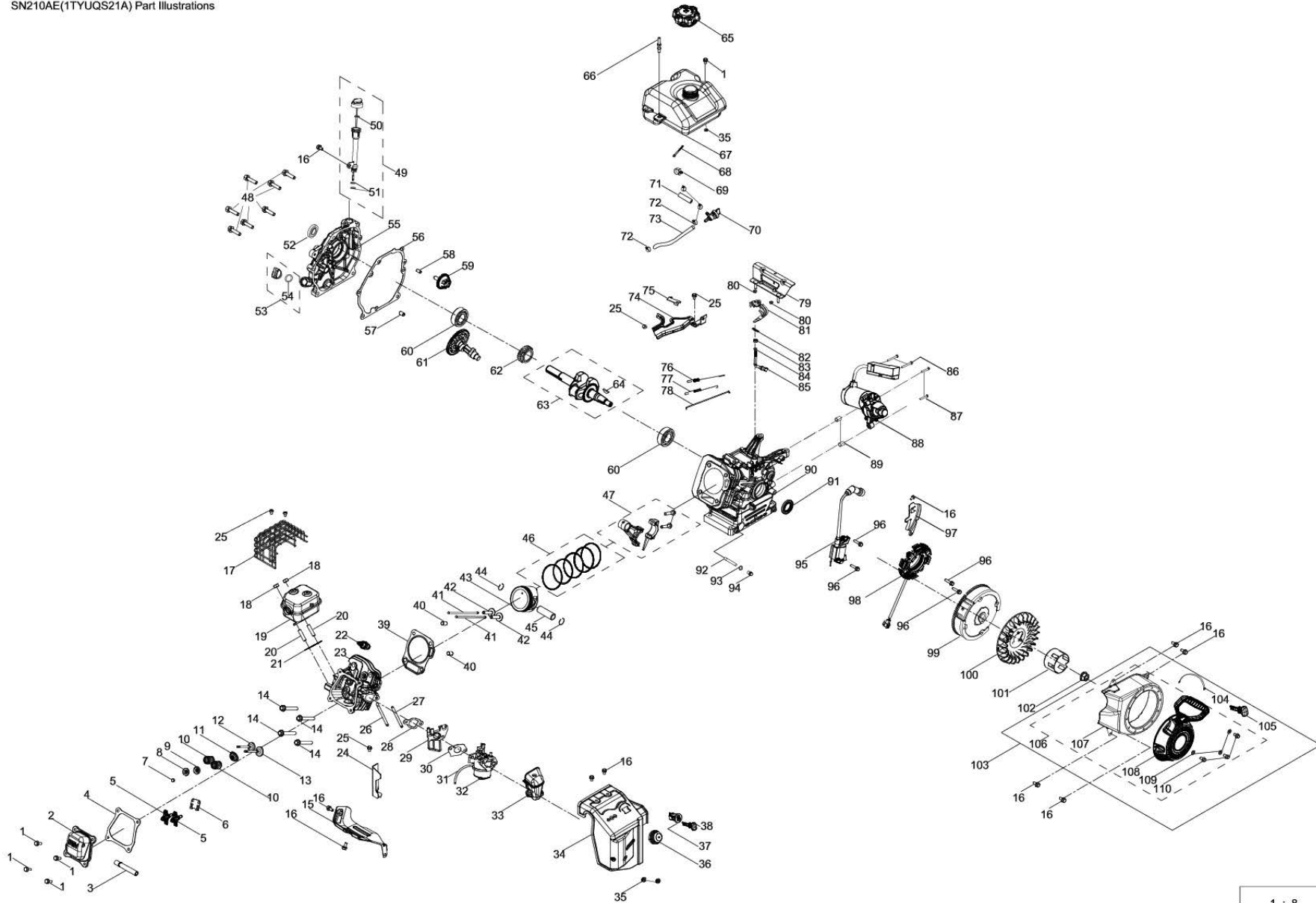
81	303020140	T型螺栓	T-Head Boltm8x50	4
82	2004-710301	上扶手组件焊接	Upper Handrail Assembly Welding	1
83	8WF-08D	平垫片GB/T96.1-1985	Flat Washer $\Phi 8 \times \Phi 18 \times 2$	4
84	8SFDD08-45D	外六角螺栓GB/T5783-1986	Hex Washer Screw M8x45	4
85	2004-710303	右双脚扳机焊接	Right Feet Trigger Welding	1
86	8SFDD05-40D	外六角螺栓GB/T5783-1986	Hex Washer Screw M5x40	4
87	203020637	自锁座	Self Locking Seat	2
88	GB/T819.1-2000	十字槽盘头机用螺栓M4x14	Cross Recessed Countersunk Head Bolt	2
89	2158-710301	自锁块凸轮	Self-Locking Block Cam	1
90	303010092	十字槽盘头自攻螺钉ST4.2x10	Cross Recessed Countersunk Head Tapping Screws	1
91	2323-710301	自锁弹簧片	Self-Locking Spring Sheet	1
92	8NG-05D	普通螺母GB/T6182-2000	Common Screw M5	1
93	8WS-05D	平垫片GB/T5287-1985	Flat Washer $\Phi 5 \times \phi 18 \times 1.5$	1
94	8SJA05-25D	十字槽盘头螺栓GB/T818-2000	Cross Recessed Countersunk Head Bolt M5x25	1
95	8NG-8D	法兰面防松螺母GB/T6182-2000	Lock Nut M8	2
96	2004-710302	左双脚扳机焊接	Left Feet Trigger Welding	1
97	2120-710301	扳机轴	Trigger Shaft	1
98	8NG-5D	防松螺母(塑胶头)GB/T6182-2000	Nylon Lock Nut M5	4
99	303010092	十字槽盘头自攻螺钉ST4.2x10	Cross Recessed Countersunk Head Tapping Screws	4
100	8430-780001	电热手柄	Heated Handle	2
101	8SFDD08-16D	外六角螺栓GB/T5783-1986	Hex Washer Screw M8x16	4
102	303010092	十字槽盘头自攻螺钉ST4.2x10	Cross Recessed Countersunk Head Tapping Screws	6
103	8WF-04D	平垫片GB/T97.1-1985	Flat Washer $\Phi 4.3 \times \Phi 12 \times 1$	6
104	2050-710301	隔套	Spacer Sleeve	6
105	2281-710302	档位支架	Gear Bracket	1
106	2190-710301	DB7103行走拉线控制盘	Walking Control Panel	2
107	2014-710301	档位扳机	Gear Trigger	2
108	2005-700401	操纵手把头	Operation Handle	2
109	8NG-8D	法兰面防松螺母M8	Lock Nut Gb/T6182-2000	4
110	8342-765701	压簧	Pul-Out Spring	2
111	8NG-8D	法兰面防松螺母M8	Lock Nut Gb/T6182-2000	2
112	8SFDD08-55D	外六角螺栓GB/T5783-1986	Hex Washer Screw M8x55	2
113	2281-710301	出雪口支架	Chute Bracket	1
114	203020380	DB7657齿垫	Db7657 Dental Pad	1
115	8NG-8D	防松螺母GB/T6182-2000	Lock Nut M8	4
116	8WT-08D	凹垫GB/T860-1987	Cupped Washer $\Phi 8 \times \Phi 22 \times 2$	4
117	2220-710301	操作面板	Operation Panel	1
118	301100037	船形开关(灯开关)	Boat Switch (Light Switch)	2
119	8SJA05-20D	十字槽盘头自攻螺钉 GB/T818-2000	Cross Recessed Countersunk Head Tapping Screws 6X20	2
120	8WS-05D	平垫片GB/T5287-1985	Flat Washer $\Phi 6 \times \phi 16 \times 2$	2
121	2435-710301	LED照明灯	Led Light	1
122	8413-710302	DB7103连接线	Db7103 Connection Line	1
123	8413-710301	DB7103连接线	Db7103 Connection Line	4

124		208CC发动机	208Cc Engine	1
125		平垫片GB/T97.1-1985	Flat Washer $\Phi 8 \times \Phi 18 \times 2$	4
126	8WS-08D	弹垫圈 $\Phi 8$	Washer Gb/T93-1987	4
127	8NG-08D	防松螺母M8	Lock Nut Gb/T6182-2000	4
128	2142-765501A	DB7655螺钉	Db7655 Screw	1
129	8WO-081505D	齿形垫圈GB/T97.1-1985	Serrated Washer $\Phi 8 \times 15 \times 0.5$	1
130	8343-765006	皮带挡杆	Belt Keeper	1
131	8WF-08D	平垫片GB/T96.1-1985	Flat Washer $\Phi 8 \times \Phi 18 \times 2$	2
132	8SFDD06-20D	法兰面外六角螺栓GB/T5783-1986	Hex Washer Screw M8x30	1
133	8SFDD08-45D	外六角法兰面螺栓GB/T5783-1986	Hex Washer Screw M8x30	1
134	8WF-08D	平垫片GB/T96.1-1985	Flat Washer $\Phi 8 \times \Phi 28 \times 3$	1
135	8122-765002	小三角带轮	Small Pulley	1
136		平键GB/T1095-2003	Flat Key	1
137	8122-765001	小同步带轮	Small Synchronous Pulley	1
138	8334-765009	衬套	Bushing	1
139	8SLJD08-40D	半圆头方颈螺栓GB/T12-1988	Half-Round Head Square Neck Bolt M8x40	1
140	8063-765001	小张紧轮套管	Small Tensioning Wheel Sleeve	1
141	2150-861102	DB8611张紧轮组合	Db8611 Tensioning Wheel Assembly	1
142	8NG-08D	法兰面防松螺母M8	Lock Nut Gb/T6182-2000	1
143	8SFDD06-20D	法兰面外六角螺栓M8x30	Hex Washer Screw Gb/T5783-1986	1
144	8WF-08D	平垫片GB/T96.1-1985	Flat Washer $\Phi 8 \times \Phi 28 \times 3$	1
145	8181-765003	小张紧板	Small Tensioning Plate	1
51	8342-765003	小张紧板拉簧	Small Tensioning Plate Spring	1
147	8063-765013	小张紧板隔套	Small Tensioning Plate Spacer	1
148	8343-765007	拉线支撑杆	Pull Cable Support Rod	1
149	8CC-35B	轴用挡圈GB/T894.1-1986	Retaining Ring For Shaft $\Phi 35$	1
150	8331-765002	拨叉铆合	Fork Riveting	1
151	8334-765502	轮式六方套	Square Cover	1
152	8NG-06D	外六角法兰面防松螺母M6	Hex Washer Lock Nut Gb/T6182-2000	6
153	302100001	摩擦轮橡胶圈	Friction Disc Rubber Ring	1
154	8024-765008	摩擦轮夹紧片	Friction Keep Plate	2
155	8SFDD06-12D	外六角法兰面螺栓M6x12	Hex Washer Screw Gb/T5783-1986	6
156	8206-765004	导向轮螺钉	Guide Wheel Screw	1
157	8121-765005	DB7650导向轮	Db7650 Guide Pulley	1
158	8292-755101	导向轮板（一）	Guide Pulley Plate 1	1
159	8NG-06D	防松螺母（塑胶头）M6	Nylon Lock Nut Gb/T6182-2000	1
160	8SFDD06-12D	法兰面外六角螺栓M6x12	Hex Washer Screw Gb/T5783-1986	6
161	203020362A	拨叉转盘组件	Fork Turntable Assembly	1
162	8PA25-30D	开口销2.5x30	Cotter Gb/T91-2000	1
163	8186-765005	行走拉线支架	Drive Cable Holder	1
164	8292-765004	导向轮板（二）	Guide Pulley Plate 2	1
165	8SFDD10-20D	外六角法兰面螺栓M10x20	Hex Washer Screw Gb/T5783-1986	1

166		6203ZN带止动槽深沟球轴承17×40×10	6203Znball Bearing Gb/T 276-1994	2
167	303160445B	轮式六方轴	Wheel Style 6 Squire Shaft	1
168	8WF-10D	平垫片GB/T97.1-1985	Flat Washer Φ10×Φ22×2	1
169	8NG-10D	防松螺母M10	Lock Nut Gb/T6182-2000	1
170	8PA18-25D	开口销GB/T91-2000	Cotter 1.8×25	2
171	2004-7103PA01	DB7103PA行走支架焊接	Db7103Pa Drive Holder Welding	1
172	8WF-10D	平垫片GB/T96.1-1985	Flat Washer Φ10×Φ22×2	2
173	8342-7650010	行走支架拉簧（一）	Drive Holder Spring 1	2
174	8292-765006A	摩擦盘支架焊接	Friction Wheel Bracket	1
175	8342-7650011	行走支架拉簧（二）	Drive Holder Spring 2	1
176	8NG-10D	细牙螺母GB/T6170-2000	Nuts - Fine Pitch Thread M10X1	1
177	8WS-10D	弹垫圈GB/T93-1987	Washer Φ10	1
178	8WF-10D	平垫片GB/T97.1-1985	Flat Washer Φ10×Φ20×2	1
179	8063-765008	摩擦盘支架轴套管	Friction Disc Bracket Shaft Bushing	1
180	8WF-06D	平垫片GB/T96.1-1985	Flat Washer Φ6×Φ16×1.5	1
181	8SFDD06-12D	外六角法兰面螺栓M6×12	Hex Washer Screw Gb/T5783-1986	1
182	8122-765005	大同步带轮	Synchronous Pulley Shaft	1
183	303090030A	DB7650轮圈	Wheel Ring	1
184	8SEAD06-10D	十字槽沉头螺栓GB/T819.2-1997	Cross Recessed Countersunk Head Bolt M6×10	6
185	8086-765003	大同步带轮轴	Synchronous Pulley Shaft	1
186	BC-174012-ST	6203Z深沟球轴承GB/T 276-1994	6203Z Deep Groove Ball Bearings 6203	2
187	8NG-08D	外六角法兰面防松螺母GB/T6182-2000	Hex Washer Lock Nut M8	1
188	2150-861102	DB8611张紧轮组合	Db8611 Tensioning Wheel Assembly	1
189	8063-765001	小张紧轮套管	Small Tensioning Plate Bushing	1
190	8181-765001	大张紧板	Big Tensioning Plate	1
191	8SLJD08-40D	半圆头方颈螺栓GB/T12-1988	Half-Round Head Square Neck Bolt M8×40	1
192	8NG-10D	防松螺母GB/T6182-2000	Lock Nut M10	1
193	8202-765008	碟形垫片	Dish Gasket	1
194	8342-765001	大张紧板拉簧	Large Tension Spring	1
195	8206-765001	大张紧板衬套	Big Tensioning Plate Bushing	1
196	8NG-06D	外六角法兰面防松螺母M6	Hex Washer Lock Nut Gb/T6182-2000	2
197	8321-765002	清雪铲支架	Snow Shovel Rack	2
198	8141-765001	塑料清雪铲	Plastic Snow Shovel	1
199	8SFDD06-12D	十字槽盘头螺栓GB/T5783-1986	Cross Recessed Countersunk Head Bolt M6×12	2
200	8024-765003	安全罩	Safety Cover	1
201	8SFDD06-12D	外六角法兰面三角头螺栓M6×12	Hex Washer Screw Gb/T6564-2000	2
202	8CC-10B	轴用挡圈GB/T894.1-1986	Retaining Ring For Shaft Φ10	1
203	8063-765011	摇杆手柄	Rocker Handle	1
204	8WF-10D	平垫片Φ10×Φ20×2	Flat Washer Gb/T97.1-1985	2
205	8087-765008A	Z形杆	Z-Rocker	1
206	8204-765004	摇杆橡胶圈	Rocker Rubber Ring	1
207	8087-765005	摇杆支撑杆	Rocker Support Rod	1

208	8NG-08D	普通螺母M8	Common Screw Gb/T6182-2000	5
209	8WT-08D	凹垫GB/T860-1987	Cupped Washer $\Phi 8 \times \Phi 22 \times 2$	2
210	8NG-08D	防松螺母（塑胶头）M8	Nylon Lock Nut Gb/T6170-2000	1
211	8SEAD05-15D	十字槽盘头螺栓GB/T819.2-1997	Cross Recessed Countersunk Head Tapping Screwsm5x15	2
212	8087-765009A	出雪口摇杆焊合	Chute Rocker Welding	1
213	8PA1.8-25D	开口销 1.8x16	Cotter Gb/T91-2000	1
214	8SFDD08-18D	法兰面外六角螺栓M8x18	Hex Washer Screw Gb/T5783-1986	1
215	8SLJD08-18D	半圆头方颈螺栓GB/T12-1988	Half-Round Head Square Neck Bolt M8x18	1
216	8331-765003	摇杆套	Rocker Bushing	1
217	8WF-08D	平垫片GB/T97.1-1985	Flat Washer $\Phi 8 \times \Phi 18 \times 2$	1
218	8292-765008	摇杆支架	Rocker Bracket	1
219	8NG-08D	法兰面防松螺母M8	Lock Nut Gb/T6182-2000	2
220	8SJAB5-16B	十字槽半圆头自攻螺钉ST5x14	Screw Gb/T9074.18-1988	6
221	8186-765004	出雪口定位压板	Chute Press Plate	3
222	8301-765003	出雪口转向定位块	Chute Location Block	1
223	8101-765003	新出雪筒	New Chute	1
224	8101-765004	小出雪筒	Small Chute	1
225	8SFDD06-16D	外六角螺栓GB/T5783-1986	Hex Washer Screw M6x16	1
226	8SLJD08-20D	半圆头方颈螺栓GB/T12-1988	Half-Round Head Square Neck Boltm8x20	1
227	8141-765006	单拉线下支撑板	Down Supporting Plate	1
228	8141-765007	单拉线上支撑板焊合	Down Supporting Plate Welding	1
229	8NG-08D	法兰面防松螺母M8	Lock Nut Gb/T6170-2000	1
230	8NG-06D	法兰面防松螺母M6	Lock Nut Gb/T6182-2000	1
231	8343-765005	压簧导杆	Pul-Out Spring Guide Rod	1
232	303200006A	单拉线塑料出雪口拉线	Plastic Chute Cable	1
233	8342-765010	单拉线压簧	Pul-Out Spring	1
234	8NG-06D	防松螺母（塑胶头）	Nylon Lock Nut Gb/T6170-2000/M6	1
235	8WF-06D	平垫片GB/T97.1-1985	Flat Washer $\Phi 6 \times \Phi 12 \times 1.5$	1
236	8SLJD08-20D	半圆头方颈螺栓GB/T12-1988	Half-Round Head Square Neck Boltm8x20	1
237	8WF-08D	平垫片GB/T97.1-1985	Flat Washer $\Phi 8 \times \Phi 18 \times 2$	2
238	8NG-08D	防松螺母（塑胶头）M8	Nylon Lock Nut Gb/T6170-2000	1
239	8204-711001	安全支架橡胶圈	Safety Bracket Rubber Ring	2
240	8292-711005	安全支架	Safety Bracket $\Phi 5.2$	1
241	306010034	卡扣	Fastener $\Phi 5$	2
242	8SFDD06-25D	外六角法兰面螺栓M6x25	Hex Washer Screw Gb/T5783-1986	1
243	8NG-06D	防松螺母（塑胶头）M6	Nylon Lock Nut Gb/T6170-2000	1
244	303071223	破雪刀	Drift Cutter Kit	2
245	8NG-8D	加厚普通螺母GB/T6182-2000	Thickening Common Nutm8	2
246		M8旋钮	M8 Knob	2
247	8SFDD08-16D	外六角法兰面螺栓GB/T5783-1986	Hex Washer Screw M8x16	2

SN210AE(1TYUQS21A) Part Illustrations





SN210AE列表

序号	物料代码	物料名称	英文名	数量
1	100011264-0003	GB5789螺栓M6×16(兰白锌)	Bolt, M6×16	5
2	100056645	168FA缸头盖(BT款_加强筋_金属呼吸阀片)	Valve Cover	1
3	100002837	168FA废气管(φ8×φ12×80)	Breather Hose	1
4	100010181	GB200缸头盖密封垫(抄取板无石棉)	Gasket, Valve Cover	1
5	100004423	170-SH摇臂组合(摇臂_螺栓_螺母_弧型)	Rocker Arm Assembly	2
6	100004469	168FA摇臂座	Rocker Arm Base	1
7	100004588	168FA排气门调节帽	Valve Adjust Cap, Exhaust	1
8	100004585	168FA排气门弹簧座	Valve Spring Seat	1
9	100004580	168FA进气门弹簧座	Valve Spring Seat	1
10	100004564	168FA气门弹簧	Valve Spring	2
11	100004600	168FA-2挡油罩组合	Intake Valve Seal	1
12	100004549	170-SH排气门	Exhaust Valve	1
13	100004523	1P70F进气门	Intake Valve	1
14	100011334-0001	GB5789螺栓M8×55(兰白锌)_10.9级	Bolt, M8×55	4
15	100007087	170-SH导流罩	Shroud	1
16	100011261-0004	GB5789螺栓M6×12(兰白锌)	Bolt, M6×12	11
17	100006476	SN210A消声器放烫罩(钢丝网)	Muffler Guard	1
18	100011422-0004	GB6170螺母M8(兰白锌)_8级	Nut, M8	2
19	100006351	170F排气消声器(无外罩_无火花消除器)	Muffler	1
20	100010387	168FA缸头排气口双头螺栓(M8×34)	Stud, M8×34	2
21	100006936	170-SH排气管垫(无石棉)	Gasket, Muffler	1
22	100009378	168FA火花塞(F6RTC)	Spark Plug	1
23	100002394	SN210缸头组合	Cylinder Head	1
24	100009054	SN210A防雪板	Snow Guard	1
25	100011215-0001	小盘螺栓M6×12(兰白锌)	Bolt, M6×12	5
26	100010357	170-SH进气管双头螺栓(M6×105)	Stud, M6×105	1
27	100010358	170-SH进气管双头螺栓(M6×117)	Stud, M6×117	1
28	100066134	670-WU化油器隔热板垫(抄取无石棉)	Gasket, Carburetor Insulator	1
29	100005599	168FA化油器隔热板	Insulator	1
30	100066135	670-WU化油器垫(抄取无石棉)	Gasket, Carburetor	1
31	100017761	复合油管(φ3.2×φ6.5×125)	Fuel Hose, φ3.2×φ6.5×125	1
32	100005360	SN210化油器总成(针阀铜基镀镍_带加浓泵接口_SN210-B_型)	Carburetor	1
33	100005054	SN210进气加热管组合	Heater Box	1
34	100005089	SN210A汽油机面板(塑料PP)	Control Panel	1
35	100011463-0002	GB6177.1螺母M6(兰白锌)_平板	Nut, M6	3
36	100005668	161F化油器启动加浓泵(O2型)	Primer	1
37	100009177	170-SH熄火开关插座	Stop Switch Base	1
38	100009178	170-SH熄火开关钥匙	Stop Switch Key	1
39	100010211	170-SH缸头密封垫(汽缸床_无石棉)	Gasket, Cylinder Head	1
40	100010558	定位销φ10×16	Pin, φ10×16	2
41	100004396	170-SH推杆	Push Rod	2
42	100004263	170-SH气门挺柱	Tappet	2
43	100003078	170-SH活塞	Piston	1
44	100003221	168FA活塞销挡圈	Circlip	2
45	100003125	170-SH活塞销	Piston Pin	1
46	100003239	1P70F活塞环总成(DH33)	Piston Ring Set	1
47	100003448	170-SH连杆三组件	Connecting Rod Assembly	1
48	100011319-0001	GB5789螺栓M8×32(兰白锌)	Bolt, M8×32	7
49	100004122-0001	170-SH机油尺组合(1/4结构_O型圈φ3×φ19_2913色)	Dipstick	1
50	100031575	O型密封圈(φ19×3_丁腈胶)	O-Ring, φ19×3	1
51	100010119	O型密封圈(φ15.5×1.5_氟橡胶)	O-Ring, φ15.5×1.5	2
52	100017654	油封(φ25×φ41.25×6_丁腈橡胶_螺旋纹)	Oil Seal, φ25×φ41.25×6	1
53	100004171-0002	170F机油塞组合(2913色)	Oil Plug	1
54	100010077	O型密封圈(φ15.8×2.5_丁腈胶)	O-Ring, φ15.8×2.5	1
55	100002981	170-SH左曲轴箱盖(改型_O型圈密封_端面中心圆安装螺纹孔)	Crankcase Cover	1
56	100066137	670-WU曲轴箱密封垫(抄取无石棉)	Gasket, Crankcase	1
57	100010554	定位销φ9×14	Pin, φ9×14	1
58	100010544	定位销φ7×14	Pin, φ7×14	1
59	100008295	170-SH调速从动齿轮组合	Governor Gear	1
60	100010680	轴承(6205)	Bearing, 6205	2

61	100030589	370-WU凸轮轴部件	Camshaft	1
62	100033214	370-WU曲轴正时主动齿轮	Drive Timing Gear	1
63	100056107	170F曲轴总成(90型_无正时主动齿_自主_R角淬火_输入端锥	Crankshaft	1
64	100010577	1P64FC半圆键	Woodruff Key	1
65	100008763	1P65FC油箱盖组合(改棘齿_细牙_带齿型油箱挂线_带通气孔	Fuel Cap	1
66	100010321	SN210A双头螺栓(M6×50)	Stud, M6×50	1
67	100008610	SN210A油箱(吹塑)	Fuel Tank	1
68	100009020	1P64FC燃油过滤器(长型_M状态_加筋)	Fuel Filter	1
69	100000671	1P70F油管定位线夹(内径φ13塑料线夹)	Clip	1
70	100008899	VP200燃油开关组合	Fuel Switch	1
71	100017738	编织油管(φ6.3×φ12.5×45)	Fuel Hose, φ6.3×φ12.5×45	1
72	100005136	1P65F板簧卡箍(φ12×8)	Clamp	4
73	100017744	编织油管(φ6.3×φ12.5×255)	Fuel Hose, φ6.3×φ12.5×255	1
74	100008467	SN210A调速机构保护罩	Governor Shield	1
75	100008378	161-SH大拉簧支架	Spring Rack	1
76	100007870	SN210油门大拉簧(长65_圈数16.75圈_刚度1.0)	Governor Spring	1
77	100007920	168FA油门小拉簧(长113_圈数50.5_刚度0.03)	Idle Spring	1
78	100007953	SN210油门操纵杆(长125)	Throttle Linkage	1
79	100009904	SN210A油箱安装支架(金属冲压件)	Fuel Tank Base	1
80	100011452-0003	GB6177.1螺母M6(兰白锌)	Nut, M6	2
81	100008418	170F油门支架组合(3个大拉簧挂孔)	Governor Lever	1
82	100007986	168FA油门调速柄开口销	Cotter Pin	1
83	100017587	油封(φ6×φ11×4_丁腈橡胶)	Oil Seal, φ6×φ11×4	1
84	100010113	O型密封圈(φ5.2×1.9_氟橡胶)	O-Ring, φ5.2×1.9	1
85	100007975	170F油门调速柄	Governor Gear Shaft	1
86	100010950-0002	GB818螺钉M4×55(兰白锌)	Screw, M4×55	2
87	100011223-0001	小盘螺栓M6×32(兰白锌)	Bolt, M6×32	2
88	100009780	SN210启动电机组件(交流电机_230V_常规控制盒_欧标插头)	Electric Starter	1
89	100010547	定位销φ8×8	Pin, φ8×8	2
90	100002666	SN210曲轴箱体(无孔_7孔_底座两条孔两圆孔_侧面Rp1/4放	Crankcase	1
91	100017601	油封(φ25×φ41.25×6_丁腈橡胶)	Oil Seal, φ25×φ41.25×6	1
92	100002906	170-SH放油管(少加工两面_90mm)	Oil Drain Pipe	1
93	100010459	平垫圈(φ10×1.5×φ16)	Washer, φ10×1.5×φ16	1
94	100010272	168FA放油螺栓(M10×1.25×15)	Earth Bolt	1
95	100009286	170F点火器组合(屏蔽火花帽_3523型_两极靴_熄火线长300	Ignition Module	1
96	100011268-0003	GB5789螺栓M6×25(兰白锌)	Bolt, M6×25	4
97	100007060	170-SH下护罩	Lower Shield	1
98	100009420	170-SH充电线圈(DC12V40W_标识贴花_端口A16)	Charging Coil	1
99	100009531	370-SH飞轮组合(带齿圈_四极磁钢_内径122.8mm_锥度3:16)	Flywheel	1
100	100007027	168FA叶轮	Cooling Fan	1
101	100007549	168FA启动引轮(带缺口_高44.7mm)	Starter Cup	1
102	100011459-0003	GB6177螺母M14×1.5(兰白锌)	Nut, M14×1.5	1
103	100081663-0001	SN210启动器总成(导风罩带螺母_带熄火开关钥匙_大拉手_4	Recoil Starter	1
104	100000568-0002	扎带(长150mm_黑色)	Tape, L=150mm	1
105	100009178	170-SH熄火开关钥匙	Stop Switch Key	1
106	100007278-0001	SN210启动器总成(导风罩带螺母_大拉手_4点钟方向_拉绳长	Recoil Starter	1
107	100053475-0001	SN210启动器风扇罩(带电机孔_顶部有孔_无支耳安装孔_690	Blower Housing	1
108	100007380-0002	SN210启动器拉盘组合(6902色)	Recoil Starter	1
109	100010894-0001	GB95平垫圈φ6(兰白锌)	Washer, φ6	3
110	100011565-0001	GB16674.1小盘螺栓M6×10(兰白锌)	Bolt, M6×10	3